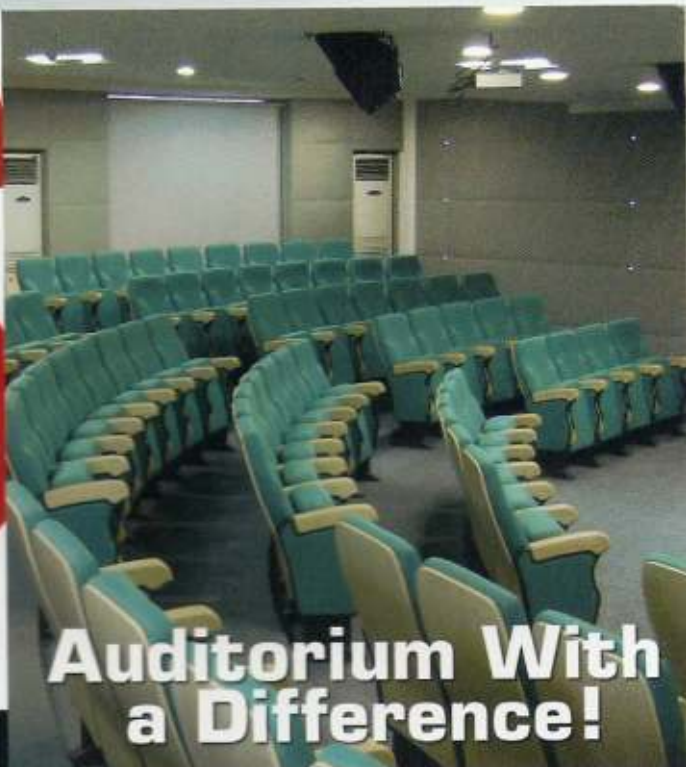


AS

AudiSolutions

ASIA'S PREMIER PUBLICATION ON AUDITORIUM DESIGN



**Auditorium With
a Difference!**



**HKCEC -
Getting Bigger
and Better**

Praj Auditorium

Auditorium With a Difference!



Among the many auditoria in and around Pune, the Praj Industries auditorium is a different one. A small audi with a seating capacity of just 120 but of high-order in that it boasts features that go with big-stake auditoria- architectural elegance, acoustical perfection, audio-visual integration et al. AS presents a snapshot.

The auditorium on the corporate premises of Praj Industries - one of the leading players in the field of Green Fuel in the country - was recently renovated to an entirely new look, and there by new performance.

The job was entrusted to renowned Pune-based architectural firm Group Phi Architects, whose team also comprised professionals from Pune. The task was to renovate the old, existing auditorium with modern amenities and state-of-the-art technology facilities so as to make it a suitable platform for the corporate

giant to use it for its select audiences and occasions.

The job primarily comprised creation of perfect acoustic ambience that is in tune with the architectural aesthetics as performed by the designers, and configuration of an audio-visual system that meets the presentation requirements of the company, besides being user-friendly in application.

The basic shape of the auditorium being crescent, the architect-interior designer stood to benefit in that he could weave in an appealing design while it was a challenge for the acoustic consultant, who was also

entrusted the job of AV integration to configure a solution that is uniformly ambient to a semi-circle structure.

Since both the designers have to go hand-in-hand, the solution worked out had both aspects in that a design with a function and vice versa. Once the basic interior had been made, the sidewalls have been



The Tech Team:

Architect & Interior designer: Hemant Mahajan, Group Phi Architects, Pune

Acoustic & A/V consultant: Vijay Purandare, V. N. Purandare & Associates, Pune

Air-conditioning consultant: Dhananjay Sinnerkar, Concept Aircon, Pune

Interior Contractor: Rahatekar, Pune

Audio System: Pankaj Pansare, Zillion Solutions, Pune

Projection System: Ketan Kardile, Sarth Enterprises, Pune

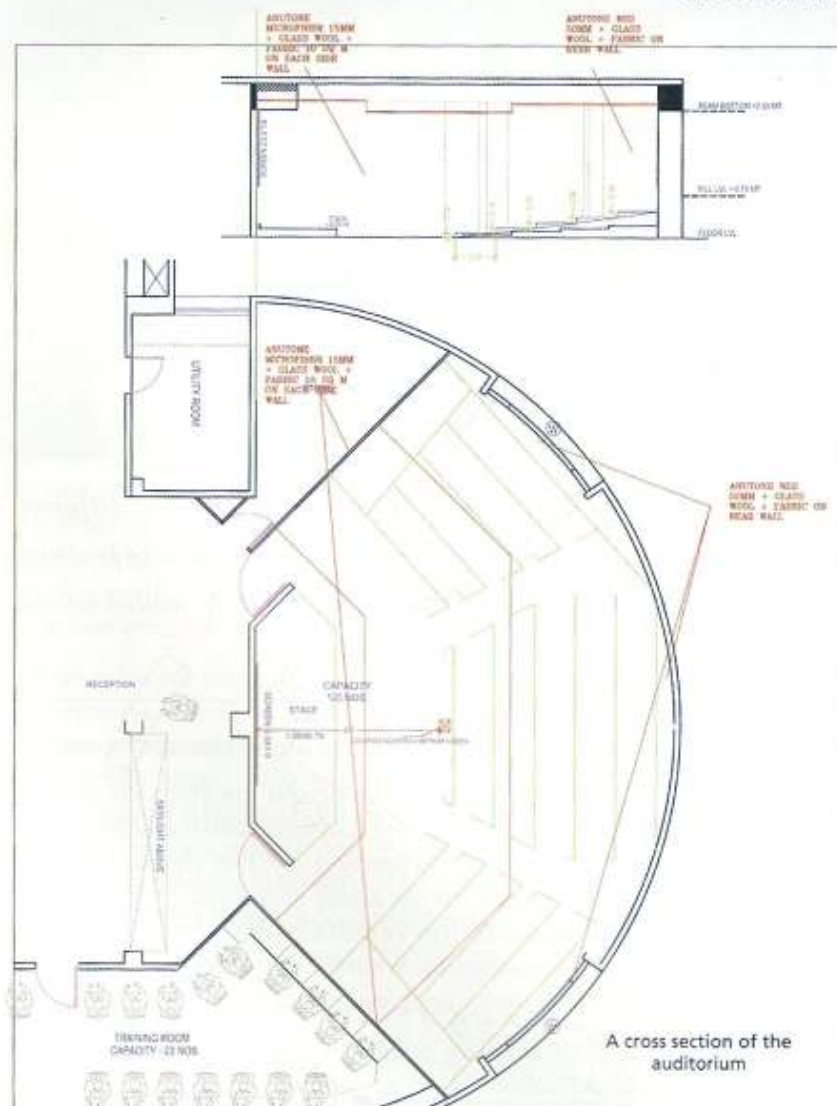
Chairs: Penworkers, Mumbai/ Pune

covered with Anutone's custom-made Mikrofiber SoundSynth glass wool panels of 25 mm each. That each of these panels come with a density of 32kg, they deliver a perfect function of acoustical absorption in a given scenario. The rear wall has been treated with Anutone NSS glass wool panel, each with a thickness of 50mm.

These panels have again been covered with acoustically absorbent fabric using Anutone SoundSynth and SoundGrippers that not only complement the acoustical character of the panels but also add the elegance of aesthetics to the ambience. The primary task of the acoustical consideration - achieving best speech intelligibility, by controlling reverberation as well as room modes - has been achieved by employing Anutone sound absorption panels in the required spec.

The ceiling, on the other hand, has been treated in two parts- first part with plain reflective surfaces, and second part with Boral acoustical tiles.

The interiors covered in light grey-coloured acoustic fabric with horizontal ribs, presented a pleasant sight. To complement the setting, the original steps have been modified in wooden framing and plywood and then covered with a matching colour carpet which also carried acoustical absorbance character.



Contd. on page AS-16...

a fulfilling experience with the patrons savouring their choicest food and beverage even as they enjoy the programme- either live or on the celluloid.

The venue is also equipped with a huge curtain, which covers the screen when movies are not being shown, in order to provide a backdrop for live performances. All of this, as part of the setting of the space, places a demand on a system that must be adaptable, well integrated and powerful enough to perform no matter what.

The system configured by Collins does achieve its purpose- in that it allows smooth and congenial switching between the JBL screen systems and live performance loudspeakers. For cinematic sound requirements, the system is composed with JBL 3632 ScreenArray loudspeakers which are again supported by JBL 4000 Series subwoofers. The 3632 cabinets are bi-amped and are powered by Crown CTs2000 amplifiers while the four 4000 Series subwoofers are powered by two Crown CTs3000 amplifiers. Together, they create a perfect cinematic audio setting like any other pure cinema house.

For the live system, on the other hand, the designer employed JBL VRX portable line array systems which are flown left and right off the stage/screen. The arrays comprise four VRX932LA's each with two flying VRX915S subs. The subs are again powered by a Crown CTs3000, one cabinet per channel, and the VRX932's by Crown CTs2000. The stage monitoring

task is handled by VERTEC VRX 915M monitors powered by Crown CTs2000.

An aspect of the flexible configuration is that a 24-channel Soundcraft GB2 Console, which is actually placed in the projection room, can be moved to the front of the auditorium in the event of live performances. This is nothing but positioning the console in front of the stage and facilitating the audio mix for stage programmes.

This powerful and versatile system is tied together with Crown's Digital B-Chain technology on a CobraNet backbone. DBC provides system control, monitoring and digital audio transport and, through its network bridge, accepts standard analog, AES digital audio and CobraNet digital channels from cinema processors.

"The system that Mark Collins and his team have engineered underscores not simply the category-leading performance of our loudspeakers, amplifiers, microphones and processing technologies," said Michael MacDonald, executive vice-president-marketing, Harman Pro Group. "It also brings the versatility and networkability of these components and the overall ability to couple performance with integration and control," he noted, commenting on the application: "It's very exciting to see an enterprise deploy a new idea such as the cinema/performance concept that Marcus is deploying and we are very happy to support their ideas."

...Contd. from page AS-14

Praj Auditorium: Auditorium With a Difference!

The facing wall, has, however, been treated in light beech coloured, wood-covered acoustical board with a view to providing contrast to the ambience as well as the screen which was to be installed in the centre of the small, low-high stage. The seating, again custom-made to suit the place, has been done in a fashion as to reduce the original viewing angle of 180 degrees to a comfortable level of sight. That each chair in the 120-seat space has been equipped with writing tablet made it more meaningful.

The AV Set-Up

The audio-visual system comprised of three 10-inch JBL EON speakers, podium microphones, general microphones as well as wireless microphones, a remotely operable screen, and a Panasonic projector with a WiFi connectivity.

The JBL EON speakers, said to be most powerful in their line, have been used in disbursing fashion, one each on either side and one in the middle in the

front portion of the auditorium so that they cover the entire crescent space uniformly. The projector, coupled with the remote controllable screen and interactive panel has been configured to be operable according to the requirement on the given occasion.

The entire space has been treated with Tower air-conditioning units providing cool comfort without creating noise disturbance.

"The shape of the auditorium is typically stylised," says Vijay Purandare, the acoustic as well as AV consultant for the project. "Since it involved renovation of the existing facility, we obviously did not have the privilege of having the specs we normally draw for the new facilities," the consultant says, adding, "we had to design the specs within the limitations of pre-existing structure."

However, according to him, with each member of the tech team being expert in their own line, the required specs fell in place right, and the project came up good.