

lajournal.in

ISSN 0975-0177 | ₹ 250.00

j o u r n a l o f
landscape
a r c h i t e c t u r e

**DIGITAL
VERSION**
ALSO AVAILABLE

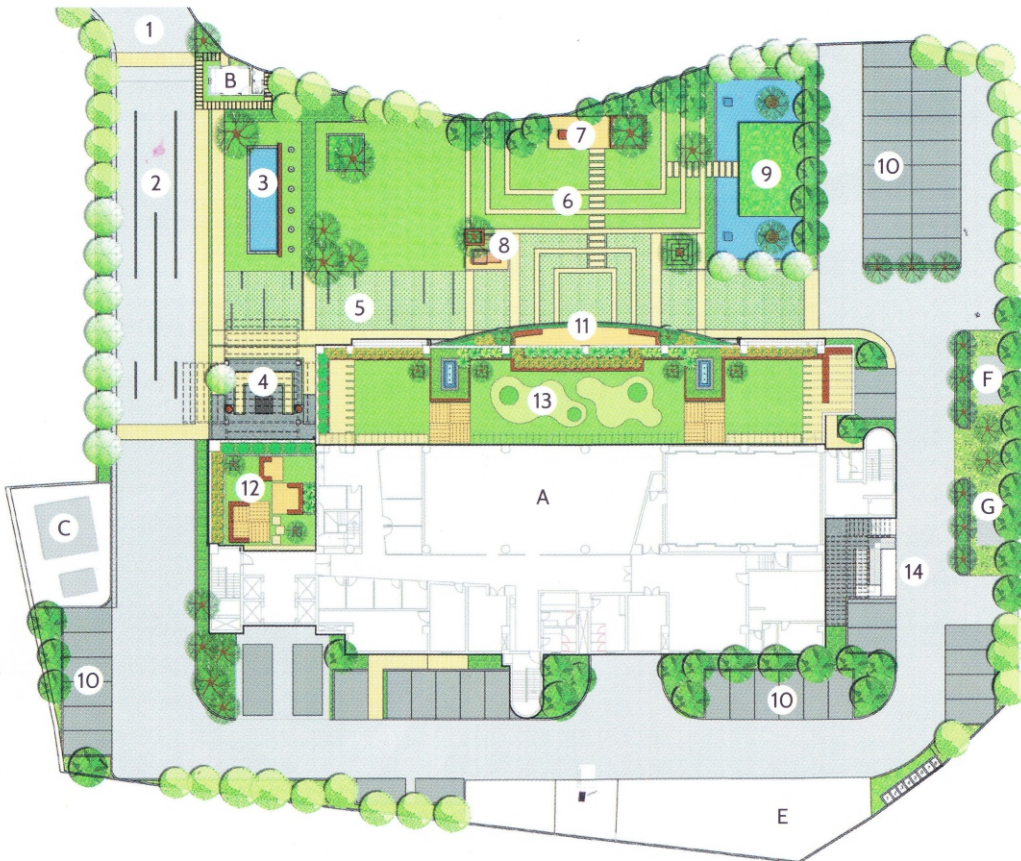
पुणे
PUNE



44
2015
चौवालीस

PRAJ TOWER FOR PRAJ INDUSTRIES | HINJEWADI, PUNE

AREA: 2.1 ACRES



- A. Office Block
 - B. Security
 - C. Generator
 - D. D.G. Sets
 - E. Water Tank & W.T.P.
 - F. Scrapyard
 - G. S.T.P.
1. Entrance
 2. Driveway
 3. Reflecting water body
 4. Office entry
 5. Fire tender road in grass pavers
 6. Amphitheatre
 7. Flag post & stage
 8. 'Datta' Mandir
 9. Meditation pavilion
 10. Parking
 11. 2, 3, 4, 5th floor terrace
 12. Third floor terrace
 13. Sixth floor terrace
 14. Rear entry

The idea was to create an inclusive and integrated landscape in the campus which would bring people closer to nature as well as to each other. Outdoor merges with the building forming a seamless transition. The spacious entrance has a reflecting water body and a feature wall with the company logo. The scale gets more intimate as one approaches the main entry. The central area of the building opens on to an amphitheatre, a gathering space. It is flanked by an inward looking meditation area set within an enclosure of trees, with a still

water body and a green roof. The materials are robust for easy maintenance.

Plants have played an important role in creating a sense of place like existing *Millingtonia* trees, *Ficus glomerata* and bamboo clumps, *Pampass* grass, *Alpinea* species along the edge of the water body, tree of *Ficus benjamin* with curtain creepers as vertical green elements and terrace gardens with a variety of *alpineas*, *heliconias*, *crinum* and *anthurium*.

